

recycled
by Result

R500X

SAFE-GUARD

**RECYCLED RIPSTOP
PADDED SAFETY JACKET**

Tough, warm and recycled: a padded, printable, hooded safety jacket in water repellent ripstop fabric at a perfect price point

Origin: China

Commodity: 6201930000

Fabric:

Outer - 100% Recycled ripstop polyester with TPU membrane

Padding - 200g/m² 100% REPREEVE® recycled polyester

Lining - 100% Recycled Polyester

Tech:

Enhanced Water Repellency, Breathable, Windproof

UK EN ISO 20471: 2013+A1:2016 Class 2

CA RIS-3279-TOM Issue 2:2019 Class 2 (orange)

NAVY: ENHANCED VISIBILITY EN17353:2020 TYPE B



23

(equivalent 1litre plastic bottles)

25424

Features:



- Soft feel, water based ink reflective safety bands
- **YKK** zip with chin guard and removable zip pull
- Elasticised bound hem, cuffs and hood
- Fully lined with padded hood
- Shaped longer back panel
- Printed safety bands
- Zipped front pockets
- Inner pocket
- Hang loop
- Recycled abrasion resistant ripstop outer with REPREEVE® performance recycled padding using environmental-friendly materials made from recycled plastic bottles and post-industrial waste offering a sustainable equivalent to conventional yarns
- **End of life recyclable: ideal for Corporate Sustainable Responsibility**
- **Recycled cartons and biodegradable bags**



USP:



To fit sizes

UK

EU

S	M	L	XL	2XL	3XL	4XL*
38	41	44	47	50	53	56
48	50	54	56	60	63	66

Colours: NAVY (289)

FLUORESCENT YELLOW (394)

FLUORESCENT ORANGE (811)

Wash Instruction:



Max x25

Decoration Access: Inside left chest and back

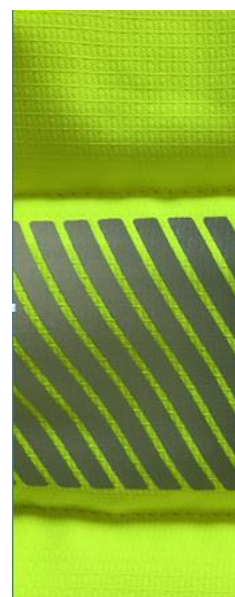
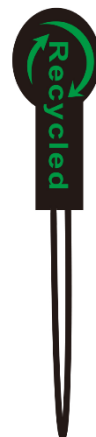
Decoration Type: Embroidery, Transfer Print, DTF

NOTE: please TEST to ensure your inks and devices are suitable for printing on this fabric

Carton Qty: 10/5*

Pack Qty: 5

SKU : 21



R500X

SAFE GUARD

RECYCLED RIPSTOP PADDED SAFETY JACKET



Date: 09 July 2020

R500X - SAFEGUARD RECYCLED RIPSTOP JACKET HOODY - Conforms to: **Yellow:**
EN ISO 20471:2013+A1-2016 - Class 2
Orange: EN ISO 20471:2013+A1-2016 & RIS-3279-TOM -Class 2



Measures in Cms

TO FIT APPROX CHEST SIZE	SIZE	S	M	L	XL	2XL	3XL	4XL	TOL +/-
	UK (INCHES)	38	41	44	47	50	53	56	
	EURO (CMS)	48	50	54	56	60	63	66	
A	1/2 CHEST AT UNDERARM - LAY JACKET OUT FLAT	53	57	61	65	68	72	76	1.0
B	BACK LENGTH (includes the 10cm back hem drop)	77	79	81	83	85	87	89	1.0
C	SLEEVE LENGTH FROM SHOULDER SEAM	67	69	71	73	74	75	76	1.0

