

NEW

# B&C MY POLO 210 LSL

PU427

B&C My Polo 210 Long Sleeve is atemporal, a classic modern staple, made in high quality fabric. This versatile polo, in high density fine piqué, delivers a soft hand feel and exceptional printability.

I can choose from a wide assortment of 15 captivating colors and 8 sizes.



## POLO SHIRT - B&C FINE PIQUÉ

100% Optimum™ pre-shrunk ring-spun Cotton  
210 g/m² | S - M - L - XL - 2XL - 3XL - 4XL\* - 5XL\*  
10 pcs/pack & 40 pcs/carton

\* ONLY AVAILABLE IN WHITE, BLACK, NAVY, ROYAL BLUE, SPORT GREY  
& ONLY SOLD BY 5 PCS/PACK



Do you like the B&C MY POLO 210 LSL  
but want it in short sleeves?  
Try the: B&C MY POLO 210

DUO♂  
CONCEPT with B&C MY POLO 210 LSL /women



BASICS	WHITE* DUO	BLACK* DUO	NAVY* DUO	ROYAL BLUE* DUO	RED DUO	SPORT GREY* DUO	DARK GREY DUO
EARTH	NEW ROASTED COFFEE DUO						
AMALFI	NEW AMALFI CORAL DUO	NUDE DUO	NEW AMALFI BLUE DUO	NEW AMALFI GREEN DUO			
HEATHER	NEW HEATHER GREY FOG DUO	NEW HEATHER BLUE DUO	NEW HEATHER BURGUNDY DUO				

SPORT GREY: 90% PRE-SHRUNK RING-SPUN COTTON - 10% VISCOSE  
HEATHER BURGUNDY: 80% PRE-SHRUNK RING-SPUN COTTON - 20% POLYESTER  
HEATHER GREY FOG: 80% PRE-SHRUNK RING-SPUN COTTON - 20% POLYESTER  
HEATHER BLUE: 80% PRE-SHRUNK RING-SPUN COTTON - 20% POLYESTER

### Style / Fit

- Modern classic style, engineered to guarantee fit excellence with comfort and movement
- Democratic fit and features suitable for many uses and any end user requirements
- Authentic polo feature: superior 1x1 rib cuff, with dimensionally-stable elastane
- Contemporary 2-button reinforced placket
- Duo Concept: Same 15 captivating colors for women

### Quality / Handfeel

- Ring-spun fabric ensures a long-lasting garment with extra soft hand-feel
- Perfectly constructed 1x1 rib collar retains ideal shape over time
- Shoulder seam with reinforcement tape
- Premium herringbone tape in neck and side vents for added comfort

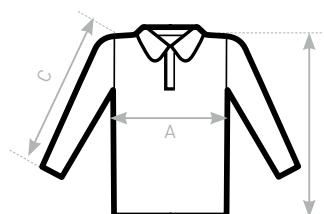
- Tone-on-tone buttons for decoration and printing flexibility
- Folded in box to ease decoration process

### Labelling

- Ultra soft satin label
- Straightforward size identification
- Labels following mandatory EU regulations

### Printability / Decoration

- Signature B&C Fine Piqué with even surface for bright and crisp printing results
- Tested and approved for all standard printing techniques applicable on cotton



### SIZES [CM]

B&C MY POLO 210 LSL PU427	S	M	L	XL	2XL	3XL	4XL	5XL
A HALF CHEST	50	53,5	57	60,5	64	68	72	76
B BODY LENGTH FROM NECK POINT	70	72	74	76	78	79	80	81
C SLEEVE LENGTH	64,5	66	67,5	69	70,5	71,5	72,5	73,5