

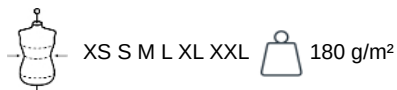
PROACT.®

PA490

Polo piqué performance mujer

- 100 % poliéster: ultrarresistente, ligero y transpirable.
- Corte ajustado y estilo moderno.

100 % poliéster piqué Cool Plus®. Corte ajustado y estilo moderno. Cuello y bajo de mangas con canalé contrastado. Plaqueta de 4 botones (en contraste o lisos según el modelo). Aberturas laterales. Peso medio en la talla M : 152g.



Certificaciones



Información adicional

Logística



Pais de origen



BD - Bangladés

Codigo de aduanas



61062000

También existe en version



PA489

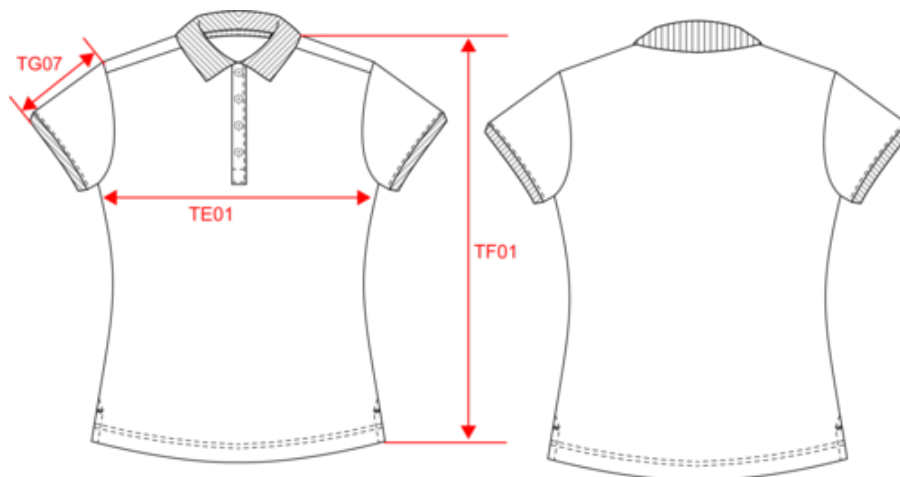


PROACT.®

PA490

Polo piqué performance mujer

Dimensiones





Measurements in cm	XS	S	M	L	XL	XXL
TE01 - 1/2 chest width at 1.5cm below armhole	43.00	46.00	49.00	52.00	55.00	58.00
TF01 - Total height from HSP	60.00	62.00	64.00	66.00	68.00	70.00
TG07 - Short sleeve length	13.00	13.75	14.50	15.25	16.00	16.75

PA490

Polo piqué performance mujer

Informacion colores

 Black RVB : 35,35,37 Pantone C : Black Pantone TCX : 19-4004TCX	 Black Red RVB : 35,35,37 Pantone C : Black Pantone TCX : 19-4004TCX	 Red RVB : 195,32,54 Pantone C : 200C Pantone TCX : 19-1664TCX	 Black RVB : 35,35,37 Pantone C : Black Pantone TCX : 19-4004TCX	 sporty grey RVB : 90,94,106 Pantone C : Black / 425C Pantone TCX : 18-0201TCX	 Black Yellow RVB : 35,35,37 Pantone C : Black Pantone TCX : 19-4004TCX	 Yellow RVB : 254,186,36 Pantone C : 1235C Pantone TCX : 15-0955TCX	 Lime RVB : 151,202,91 Pantone C : 367C Pantone TCX : 14-0244TCX	 Sporty Navy RVB : 34,51,72 Pantone C : 7546C Pantone TCX : 19-4024TCX	
 Red RVB : 195,32,54 Pantone C : 200C Pantone TCX : 19-1664TCX	 Black RVB : 35,35,37 Pantone C : Black Pantone TCX : 19-4004TCX	 Sky Blue RVB : 130,175,216 Pantone C : 542C Pantone TCX : 15-3920TCX	 Sporty Navy RVB : 34,51,72 Pantone C : 7546C Pantone TCX : 19-4024TCX	 sporty grey RVB : 90,94,106 Pantone C : Black / 425C Pantone TCX : 19-4004TCX / 18-0201TCX	 Black RVB : 35,35,37 Pantone C : Black Pantone TCX : 19-4004TCX	 Sporty Navy RVB : 34,51,72 Pantone C : 7546C Pantone TCX : 19-4024TCX	 Sporty Navy Red RVB : 34,51,72 Pantone C : 7546C Pantone TCX : 19-4024TCX	 Red RVB : 195,32,54 Pantone C : 200C Pantone TCX : 19-1664TCX	
 Sporty Navy RVB : 34,51,72 Pantone C : 7546C Pantone TCX : 19-4024TCX	 White RVB : 236,236,252 Pantone C : White Pantone TCX : 11-0601TCX	 Sporty Royal Blue RVB : 90,94,106 Pantone C : Black / 425C Pantone TCX : 18-0201TCX	 sporty grey RVB : 90,94,106 Pantone C : Black / 425C Pantone TCX : 19-4004TCX / 18-0201TCX	 Sporty Royal Blue RVB : 4,96,160 Pantone C : 647C Pantone TCX : 18-4045TCX	 White RVB : 236,236,252 Pantone C : White Pantone TCX : 11-0601TCX	 White Red RVB : 236,236,252 Pantone C : White Pantone TCX : 11-0601TCX	 White RVB : 236,236,252 Pantone C : White Pantone TCX : 11-0601TCX	 Red RVB : 195,32,54 Pantone C : 200C Pantone TCX : 19-1664TCX	 Sporty Royal Blue RVB : 4,96,160 Pantone C : 647C Pantone TCX : 18-4045TCX
 White RVB : 236,236,252 Pantone C : White Pantone TCX : 11-0601TCX	 sporty grey RVB : 90,94,106 Pantone C : Black / 425C Pantone TCX : 19-4004TCX / 18-0201TCX	 White RVB : 236,236,252 Pantone C : White Pantone TCX : 11-0601TCX	 Sporty Navy RVB : 34,51,72 Pantone C : 7546C Pantone TCX : 19-4024TCX	 Wine RVB : 91,39,54 Pantone C : 504C Pantone TCX : 19-1522TCX	 sporty grey RVB : 90,94,106 Pantone C : Black / 425C Pantone TCX : 19-4004TCX / 18-0201TCX				

Logistica  5  25

Sizes	Width (cm)	Height (cm)	Length (cm)	Net weight (kg)	Gross weight (kg)	Pieces/Box	Pieces/Bundle
XS	40.00000	25.00000	60.00000	6.40000	8.00000	25	5
S	40.00000	25.00000	60.00000	7.00000	8.40000	25	5
M	40.00000	25.00000	60.00000	7.40000	8.80000	25	5
L	40.00000	25.00000	60.00000	7.90000	9.30000	25	5
XL	40.00000	30.00000	60.00000	8.40000	9.80000	25	5
XXL	40.00000	30.00000	60.00000	8.90000	10.30000	25	5