

PROACT.[®]

PA150

Bermuda donna

- Tessuto morbido e idrorepellente per un comfort ottimale.
- Taglio dritto.
- 2 tasche laterali profonde e 2 tasche posteriori a filetto con patta.

96% Poliestere / 4% Elastan. Tessuto morbido e resistente all'acqua per il massimo comfort. Taglio dritto. Cintura con passanti, 2 tasche laterali e 2 tasche profonde a filetto con pattina sul retro.



38 IT (34 FR) 40 IT (36 FR) 42 IT (38 FR) 44 IT (40 FR) 46 IT (42 FR) 48 IT (44 FR) 50 IT (46 FR) 160 g/m²



Certificazioni



Informazioni complementari

Logistica



1



20

Paese d'origine



CN - Cina
VN - Vietnam

Codice doganale



62046390

Disponibile anche nella versione



PA149



Black



Dark Navy



Light Sand

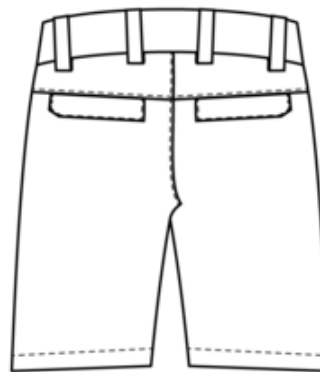
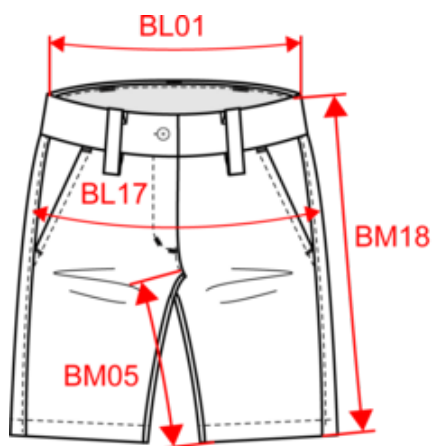


White

PA150

Bermuda donna

Dimensioni



Measurements in cm	38 IT	40 IT	42 IT	44 IT	46 IT	48 IT	50 IT
BL01 - 1/2 waist width (buttoned up and front band over back band)	35.50	37.50	39.50	41.50	43.50	45.50	47.50
BL17 - 1/2 hip width (measured parallel to waistband)	44.30	46.30	48.30	50.30	52.30	54.30	56.30
BM18 - Side length (waistband included)	44.10	44.90	45.60	46.40	47.10	47.90	48.60

PROACT[®]

PA150

Bermuda donna

Informazioni colori

 **Black**

RVB : 35,35,37
Pantone C : Black
Pantone TCX : 19-4004TCX

 **Dark Navy**

RVB : 33,38,45
Pantone C : 426C
Pantone TCX : 19-4007TCX

 **Light Sand**

RVB : 196,179,157
Pantone C : 480C
Pantone TCX : 15-1304TCX

 **White**

RVB : 236,236,252
Pantone C : White
Pantone TCX : 11-0601TCX

Logistica



1



20

Sizes	Width (cm)	Height (cm)	Length (cm)	Net weight (kg)	Gross weight (kg)	Pieces/Box	Pieces/Bundle
38 IT	40.00	13.00	60.00	3.2	4.2	20	1
40 IT	40.00	13.00	60.00	3.4	4.4	20	1
42 IT	40.00	13.00	60.00	3.6	4.6	20	1
44 IT	40.00	13.00	60.00	3.8	4.8	20	1
46 IT	40.00	13.00	60.00	4	5	20	1
48 IT	40.00	13.00	60.00	4.2	5.2	20	1
50 IT	40.00	13.00	60.00	4.4	5.4	20	1

Taille fabricant	Pays-Bas	Italie	Portugal	Espagne	Royaume-Uni	Allemagne
34 FR	32 NL	38 IT	34 PT	34 ES	8 UK	32 DE
36 FR	34 NL	40 IT	36 PT	36 ES	10 UK	34 DE
38 FR	36 NL	42 IT	38 PT	38 ES	12 UK	36 DE
40 FR	38 NL	44 IT	40 PT	40 ES	14 UK	38 DE
42 FR	40 NL	46 IT	42 PT	42 ES	16 UK	40 DE
44 FR	42 NL	48 IT	44 PT	44 ES	18 UK	42 DE
46 FR	44 NL	50 IT	46 PT	46 ES	20 UK	44 DE