

# NS735

## Eco-friendly men's washed effect utility trousers




### About

- No label: 100% customisable.
- Organic cotton twill with a touch of stretch.
- Faded look for an authentic casual look.

98% organic cotton, 2% elastane. Twill fabric. Casual fit. Waistband with belt loops. Fly with horn-effect button and recycled metal zip. Patch pockets front and back. Twin-needle over stitching on front and back and crotch for extra backing. Twin-needle over stitching on leg hem. Faded look. Garment dyed after assembly: colours may vary slightly from item to item. This product is likely to rub off in contact with light surfaces or garments. With each wash, the colour gradually lightens and the washed effect becomes more pronounced.

 265 g/m<sup>2</sup>

### Sizes

 26 UK (36 FR) 28 UK (38 FR) 30 UK (40 FR) 32 UK (42 FR) 34 UK (44 FR) 36 UK (46 FR) 38 UK (48 FR)

### More information

#### Logistic



1



20



#### Country of origin

BD - Bangladesh

#### Customs code



62034235

### Colours



Washed  
Coal  
Grey



Washed  
Dark  
Camel



Washed  
Organic  
Khaki

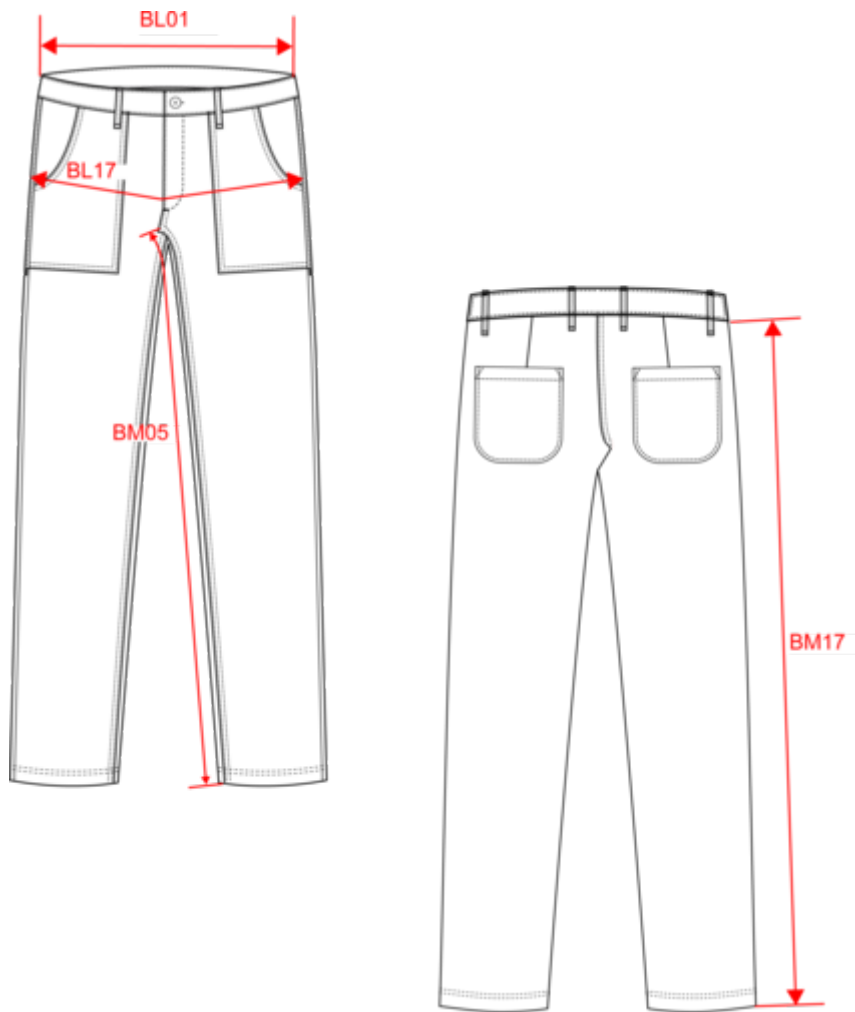
### Certifications



Organic  
EGL N°165651 / KARIBAN GROUP



Dimensions (cm)




Measurements in cm	26 UK	28 UK	30 UK	32 UK	34 UK	36 UK	38 UK
BL01 - 1/2 waist width (buttoned up and front band over back band)	38.50	40.50	42.50	44.50	46.50	49.00	51.50
BL17 - 1/2 hip width (measured parallel to waistband)	47.50	49.50	51.50	53.50	55.50	57.50	59.50
BM05 - Inseam length	80.00	80.00	80.00	80.00	80.00	80.00	80.00
BM17 - Side length (waistband excluded)	102.00	102.50	103.00	103.50	104.00	104.50	105.00

# NS735

## Eco-friendly men's washed effect utility trousers

### Colours information

 **Washed Coal Grey**  
 RVB : 52,54,57  
 Pantone C : 447C  
 Pantone TCX : 19-4205TCX

 **Washed Dark Camel**  
 RVB : 142,113,85  
 Pantone C : 874C  
 Pantone TCX : 17-1038TCX

 **Washed Organic Khaki**  
 RVB : 85,89,77  
 Pantone C : 418C  
 Pantone TCX : 19-0312TCX

### Logistic



1



20

Sizes	Width (cm)	Height (cm)	Length (cm)	Net weight (kg)	Gross weight (kg)	Pieces/Box	Pieces/Bundle
26 UK	40.00	20.00	60.00	8	9.5	20	1
28 UK	40.00	20.00	60.00	8.3	9.8	20	1
30 UK	40.00	20.00	60.00	8.7	10.2	20	1
32 UK	40.00	20.00	60.00	8.9	10.4	20	1
34 UK	40.00	20.00	60.00	9.3	10.8	20	1
36 UK	40.00	20.00	60.00	9.7	11.2	20	1
38 UK	40.00	20.00	60.00	9.9	11.4	20	1