



About

- Made in Portugal.
- Towelling material: comfortable and breathable.
- No label: 100% personalisable.

80% organic cotton / 20% post-consumer recycled polyester. Made in Portugal. Combed cotton. Towelling fabric. Enzyme washed. Regular fit. Tone-on-tone herringbone taped neck. Double-needle hem on sleeves and garment bottom. Patch belt with drawstring at the waist and embroidered eyelets for the drawstring passage. Front closure with recycled metal zipper. Two side pockets at the waist with pocket opening stitching. Half-circle in the back.

 210 g/m² 

Sizes



More information

Logistic

 5

 25



Country of origin

PT - Portugal

Customs code

 61046200

Colours

 Ivory

 Malachite Green

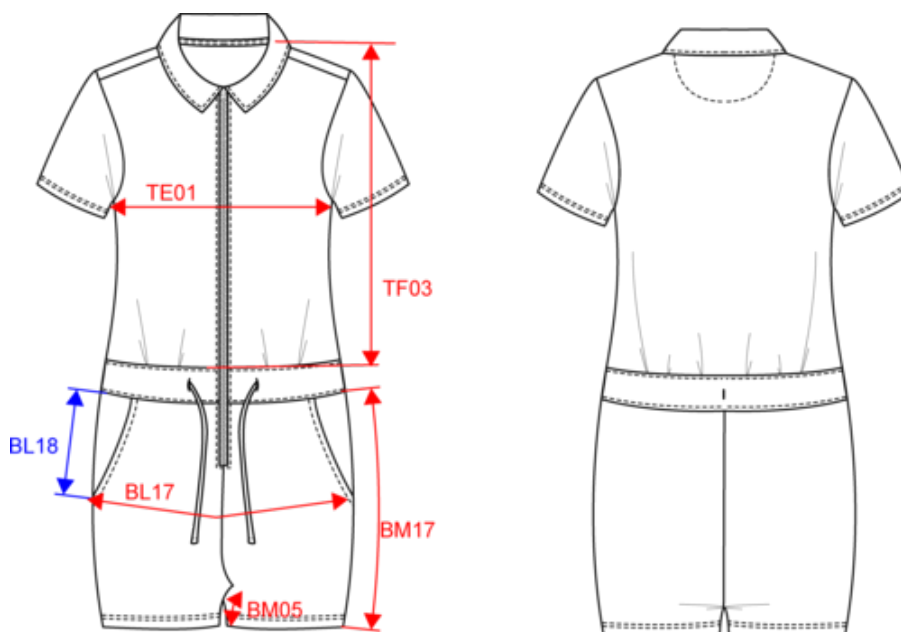
 Pomelo

Certifications



Made with 80% Organic materials.
Certified by Ecocert Greenlife
EGL N°183960 / TOPTEX France

Dimensions (cm)



Measurements in cm	XS	S	M	L	XL
BL17 - 1/2 hip width (measured parallel to waistband)	47.00	50.00	53.00	56.00	59.00
BL18 - Hip height from bottom of waistband	12.00	12.75	13.50	14.25	15.00
BM05 - Inseam length	11.00	11.00	11.00	11.00	11.00
BM17 - Side length (waistband excluded)	30.50	31.25	32.00	32.75	33.50
TE01 - 1/2 chest width at 1.5cm below armhole	45.00	48.00	51.00	54.00	57.00
TF03 - Front total height from HSP	45.50	47.50	49.50	51.50	53.50

NS5002

Eco-friendly ladies' Terry Towel zipped jumpsuit

Colours information



Ivory
RVB : 236,231,218
Pantone C : 7534C
Pantone TCX : 11-0701TCX



Malachite Green
RVB : 0,111,83
Pantone C : 335C
Pantone TCX : 18-5338TCX



Pomelo
RVB : 179,97,81
Pantone C : 7522C
Pantone TCX : 17-1532TCX

Logistic



5



25

Sizes	Width (cm)	Height (cm)	Length (cm)	Net weight (kg)	Gross weight (kg)	Pieces/Box	Pieces/Bundle
XS	40.00000	30.00000	60.00000	8.25000	9.10000	25	5
S	40.00000	30.00000	60.00000	8.75000	9.60000	25	5
M	40.00000	30.00000	60.00000	9.30000	10.15000	25	5
L	40.00000	30.00000	60.00000	9.95000	10.80000	25	5
XL	40.00000	30.00000	60.00000	10.45000	11.30000	25	5