

NS406

Unisex eco-friendly French Terry short sleeve drop shoulder hooded sweatshirt



85% organic cotton/15% post-consumer recycled polyester. Combed cotton. Regular fit with dropped shoulders. Enzyme-washed. French Terry 3-ply LST (Low Shrinkage Terry: pre-shrunk fleece). 1/2 circle in the back. 2-panel hood, lined in main fabric with over stitching all round. Embroidered eyelets. Flat drawstring with ribbed stitching finish. Minimalist side pockets. Rib 1 x 1 hem. Matching taped neck finish in the main material inside the collar.

 300 g/m² 

Sizes

 XS S M L XL XXL 3XL

More information

Logistic

 5

 20




Country of origin

BD - Bangladesh

Customs code

 61102099

Colours

 Black  Ivory

Certifications

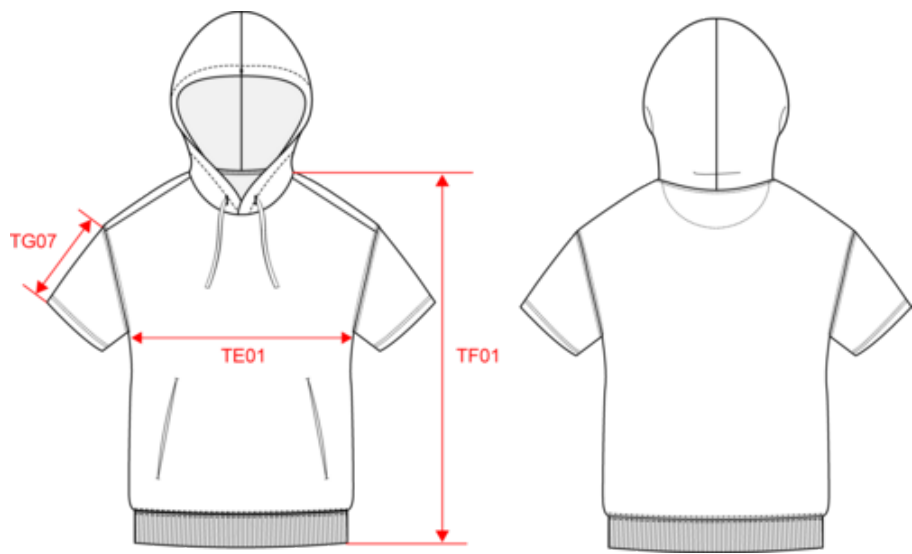

Made with 85% Organic materials
EGL N°165651 / KARIBAN GROUP

 **STANDARD 100**
CQ 1007/7
IPTH
www.oeko-tex.com

 **VEGAN**

NS406
Unisex eco-friendly French Terry short sleeve drop shoulder hooded sweatshirt

Dimensions (cm)




Measurements in cm	XS	S	M	L	XL	XXL	3XL
TE01 - 1/2 chest width at 1.5cm below armhole	51.00	54.00	57.00	60.00	63.00	66.00	69.00
TF01 - Total height from HSP	67.00	69.00	71.00	73.00	75.00	77.00	79.00
TG07 - Short sleeve length	21.25	22.00	22.75	23.50	24.25	25.00	25.75

NS406

Unisex eco-friendly French Terry short sleeve drop shoulder hooded sweatshirt

Colours information




Black

RVB : 35,35,37

Pantone C : Black

Pantone TCX : 19-4004TCX



Ivory

RVB : 236,231,218

Pantone C : 7534C

Pantone TCX : 11-0701TCX

Logistic



5



20

Sizes	Width (cm)	Height (cm)	Length (cm)	Net weight (kg)	Gross weight (kg)	Pieces/Box	Pieces/Bundle
XS	40.00	28.00	60.00	10	11.25	20	5
S	40.00	28.00	60.00	10.05	11.5	20	5
M	40.00	28.00	60.00	10.55	12	20	5
L	40.00	28.00	60.00	11.25	12.7	20	5
XL	40.00	28.00	60.00	11.85	13.3	20	5
XXL	40.00	28.00	60.00	12.45	13.9	20	5
3XL	40.00	28.00	60.00	13.45	14.9	20	5