

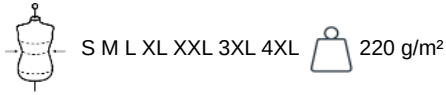
KARIBAN

K243

Polo manga larga hombre

- Superficie lisa y calidad de estampado perfecta.
- Polo chic y casual.
- Amplia gama de colores.

100% algodón peinado piqué - lavable a 60°C (Oxford Grey : 90% algodón / 10% viscosa y lavable a 40°C). Malla de punto piqué. Cuello y puños de canalé. Tira cubrecosturas en cuello y aberturas laterales contrastadas (de color Oxford Grey para todos los colores salvo para el color Oxford Grey que es Dark Grey). Tapeta con 3 botones. Acabado con doble pespunte en el bajo de la prenda. Peso medio en la talla L : 310g.



Certificaciones



Informacion adicional

Logística



Pais de origen



BD - Bangladés

Codigo de aduanas



61051000

También existe en version



K244

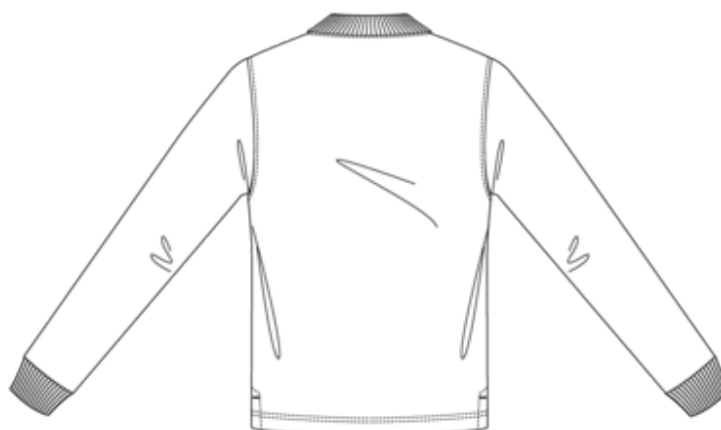
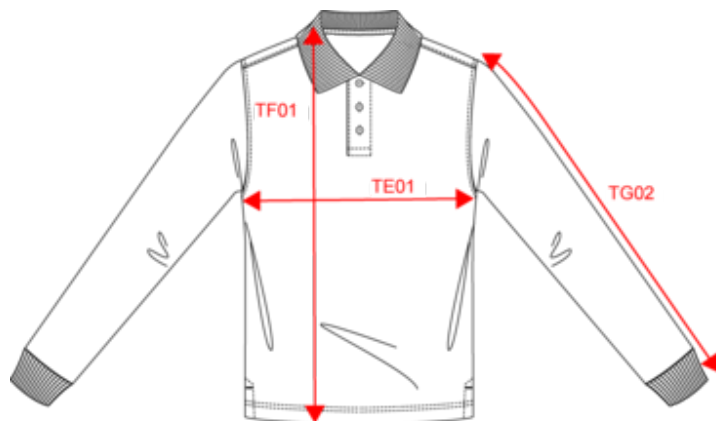


KARIBAN

K243

Polo manga larga hombre

Dimensiones






| Measurements in cm | S | M | L | XL | XXL | 3XL | 4XL |
|---|-------|-------|-------|-------|-------|-------|-------|
| TE01 - 1/2 chest width at 1.5cm below armhole | 50.00 | 53.00 | 56.00 | 59.00 | 62.00 | 65.00 | 68.00 |
| TF01 - Total height from HSP | 70.00 | 72.00 | 74.00 | 76.00 | 78.00 | 80.00 | 82.00 |
| TG02 - Long sleeve length | 65.25 | 66.25 | 67.25 | 68.25 | 69.25 | 70.25 | 71.25 |

KARIBAN

K243

Polo manga larga hombre

Informacion colores

| | | | | |
|---|---|--|---|--|
|  Ash Heather RVB : Pantone C : Based on Warm gray 1C Pantone TCX : Based on 13-4108TCX |  Black RVB : 35,35,37 Pantone C : 433C / Black Pantone TCX : 19-4012TCX / 19-4004TCX |  Chocolate RVB : 63,52,49 Pantone C : 412C Pantone TCX : 19-0910TCX |  Dark Grey RVB : 63,60,60 Pantone C : 447C Pantone TCX : 19-0000TCX |  Dark Khaki RVB : 75,71,61 Pantone C : 418C Pantone TCX : 19-0414TCX |
|  Forest Green RVB : 41,62,48 Pantone C : 5605C Pantone TCX : 19-5918TCX |  Fuchsia RVB : 188,21,94 Pantone C : 7425C Pantone TCX : 18-1945TCX |  Kelly Green RVB : 0,105,74 Pantone C : 7727C Pantone TCX : 18-5338TCX |  Light Royal Blue RVB : 53,95,151 Pantone C : 653C Pantone TCX : 18-4041TCX |  Light Sand RVB : 196,179,157 Pantone C : 480C Pantone TCX : 15-1304TCX |
|  Lime RVB : 151,202,91 Pantone C : 367C Pantone TCX : 14-0244TCX |  Navy RVB : 41,46,56 Pantone C : 433C / Black Pantone TCX : 19-4012TCX / 19-4004TCX |  Orange RVB : 252,107,16 Pantone C : 1585C Pantone TCX : 16-1364TCX |  Oxford Grey RVB : Pantone C : Based on Cool gray 7C Pantone TCX : Based on 16-3850TCX |  Purple RVB : 84,67,105 Pantone C : 7447C Pantone TCX : 19-3620TCX |
|  Red RVB : 195,32,54 Pantone C : 200C Pantone TCX : 19-1664TCX |  Sky Blue RVB : 136,169,206 Pantone C : 5425C Pantone TCX : 14-4121TCX |  Tropical Blue RVB : 0,111,159 Pantone C : 7468C Pantone TCX : 18-4537TCX |  White RVB : 236,236,252 Pantone C : White Pantone TCX : 11-0601TCX |  Wine RVB : 83,36,48 Pantone C : 504C Pantone TCX : 19-1528TCX |
|  Yellow RVB : 252,205,37 Pantone C : 116C Pantone TCX : 130757TCX | | | | |

Logistica



5



25

| Sizes | Width (cm) | Height (cm) | Length (cm) | Net weight (kg) | Gross weight (kg) | Pieces/Box | Pieces/Bundle |
|-------|------------|-------------|-------------|-----------------|-------------------|------------|---------------|
| S | 40.00000 | 18.00000 | 60.00000 | 6.90000 | 8.20000 | 25 | 5 |
| M | 40.00000 | 18.00000 | 60.00000 | 7.40000 | 8.70000 | 25 | 5 |
| L | 40.00000 | 18.00000 | 60.00000 | 7.90000 | 9.20000 | 25 | 5 |
| XL | 40.00000 | 20.00000 | 60.00000 | 8.40000 | 9.70000 | 25 | 5 |
| XXL | 40.00000 | 20.00000 | 60.00000 | 8.90000 | 10.20000 | 25 | 5 |
| 3XL | 40.00000 | 22.00000 | 60.00000 | 9.40000 | 10.70000 | 25 | 5 |
| 4XL | 40.00000 | 22.00000 | 60.00000 | 9.90000 | 11.20000 | 25 | 5 |